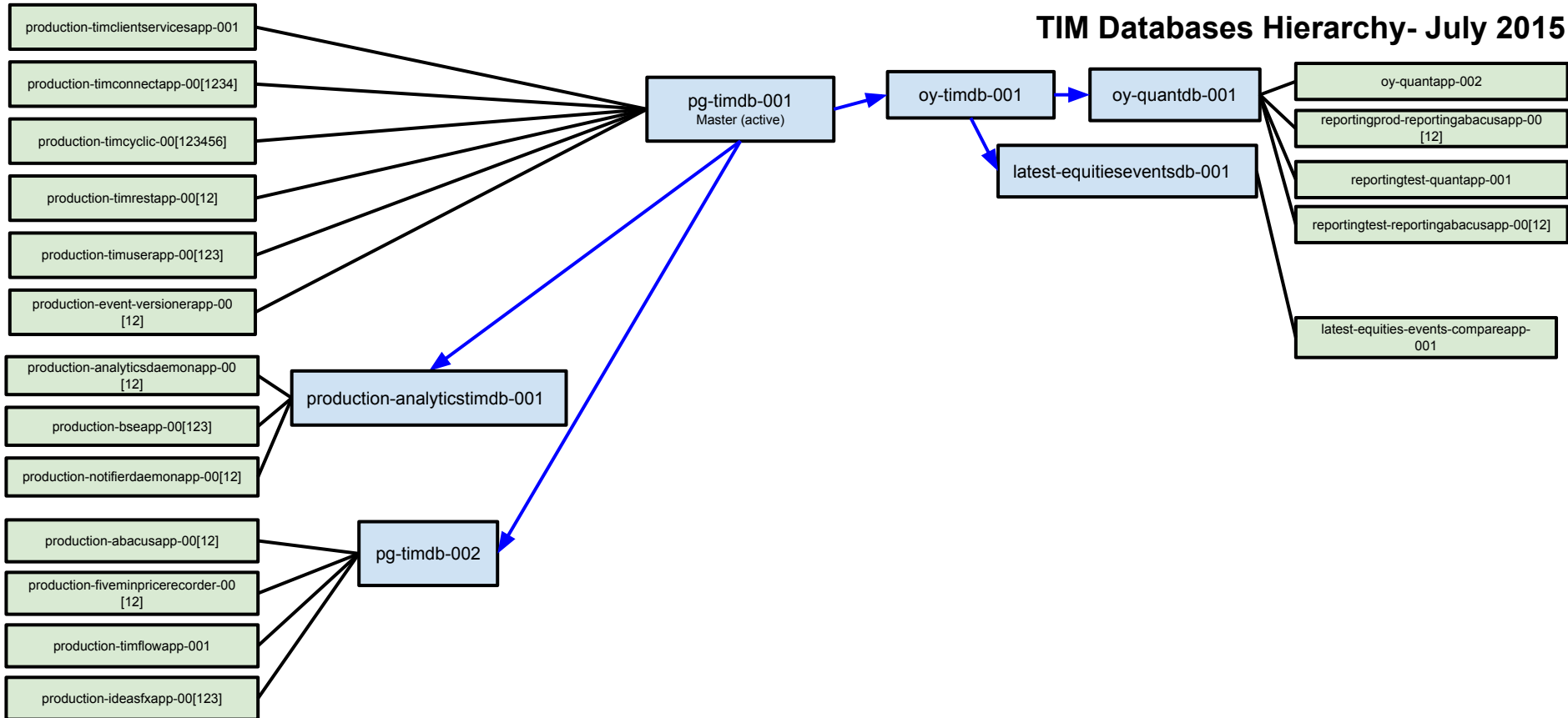


TIM Databases Hierarchy- July 2015



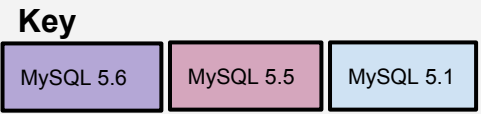
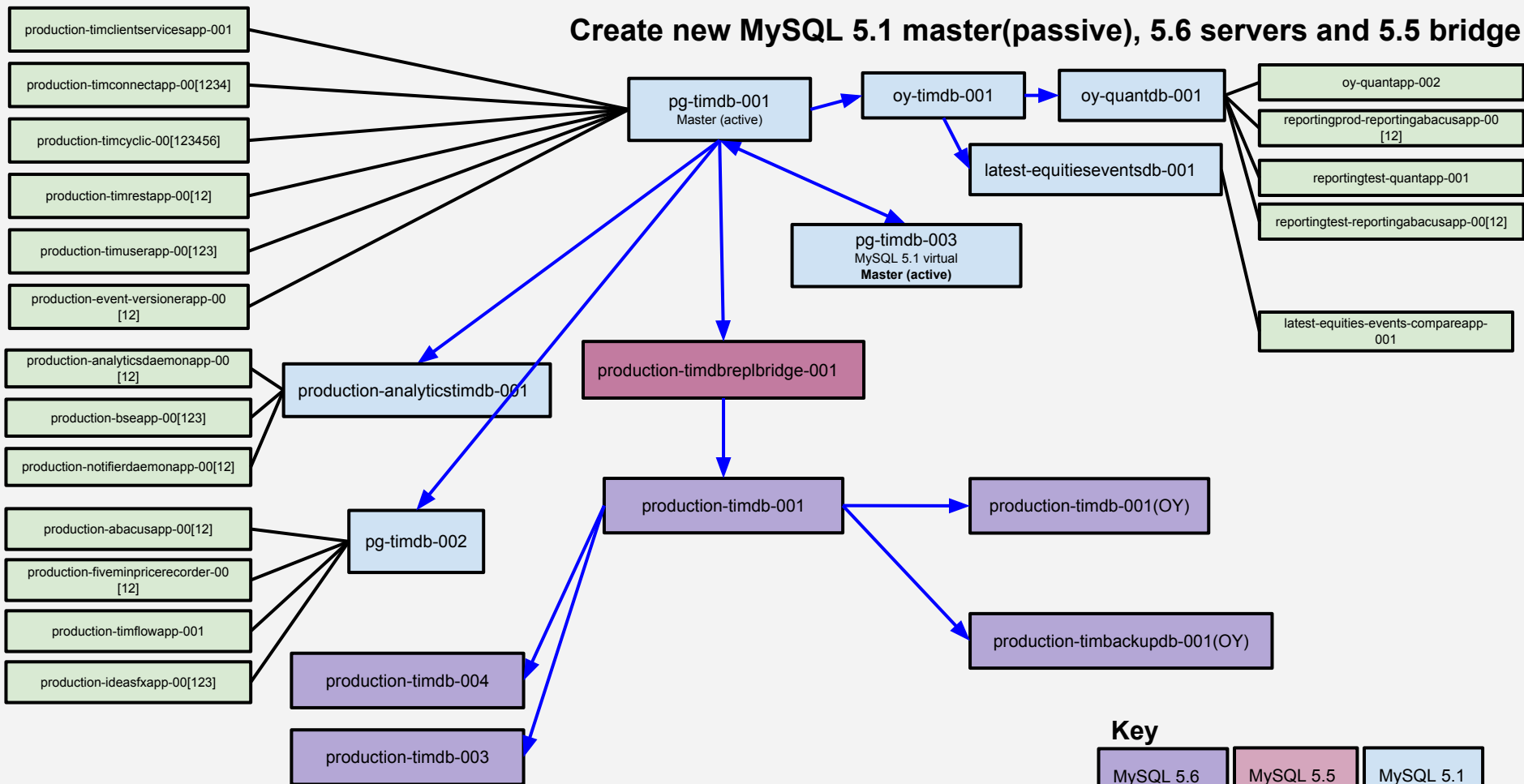
Key

MySQL 5.6	MySQL 5.5	MySQL 5.1
-----------	-----------	-----------

→ Replication (data flow)

— Application interaction/usage

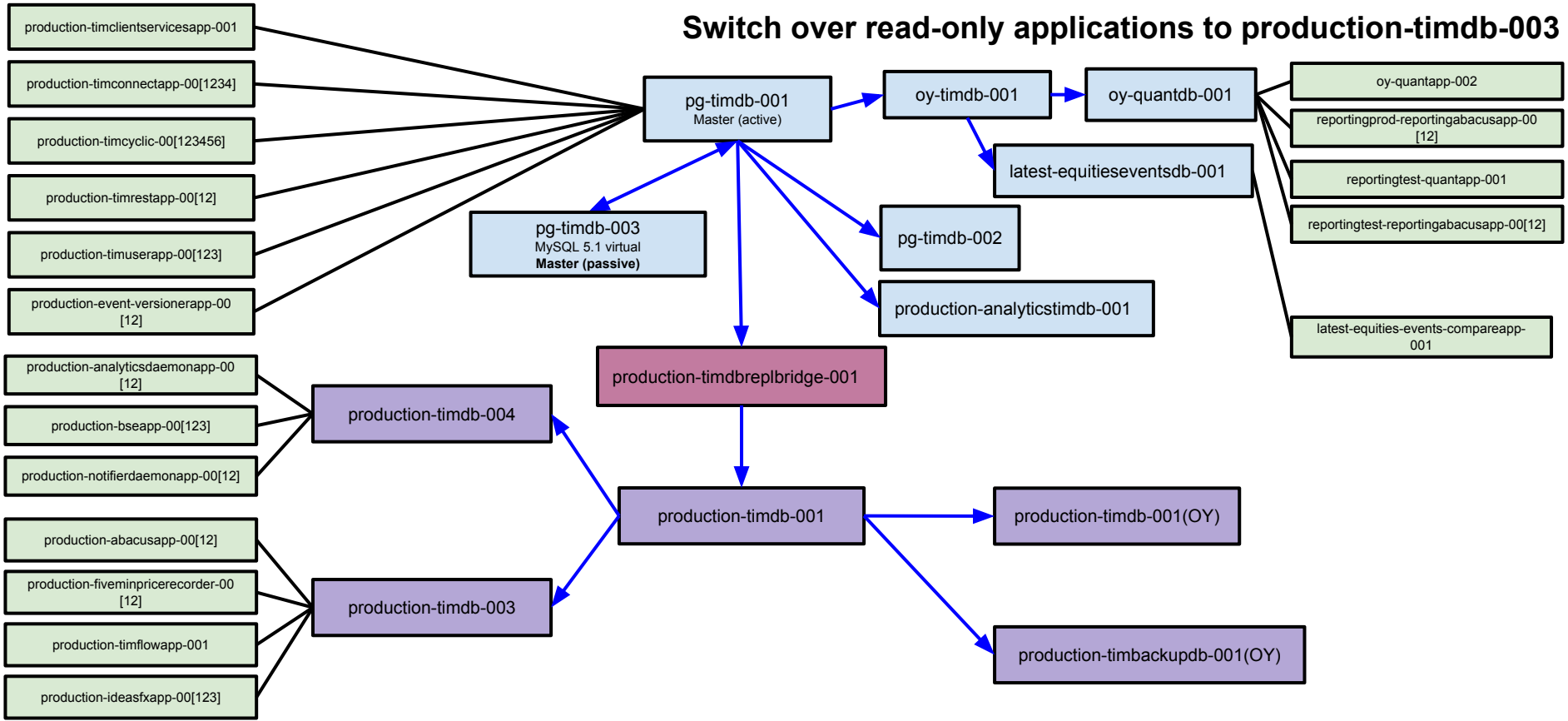
Create new MySQL 5.1 master(passive), 5.6 servers and 5.5 bridge



→ Replication (data flow)

— Application interaction/usage

Switch over read-only applications to production-timdb-003



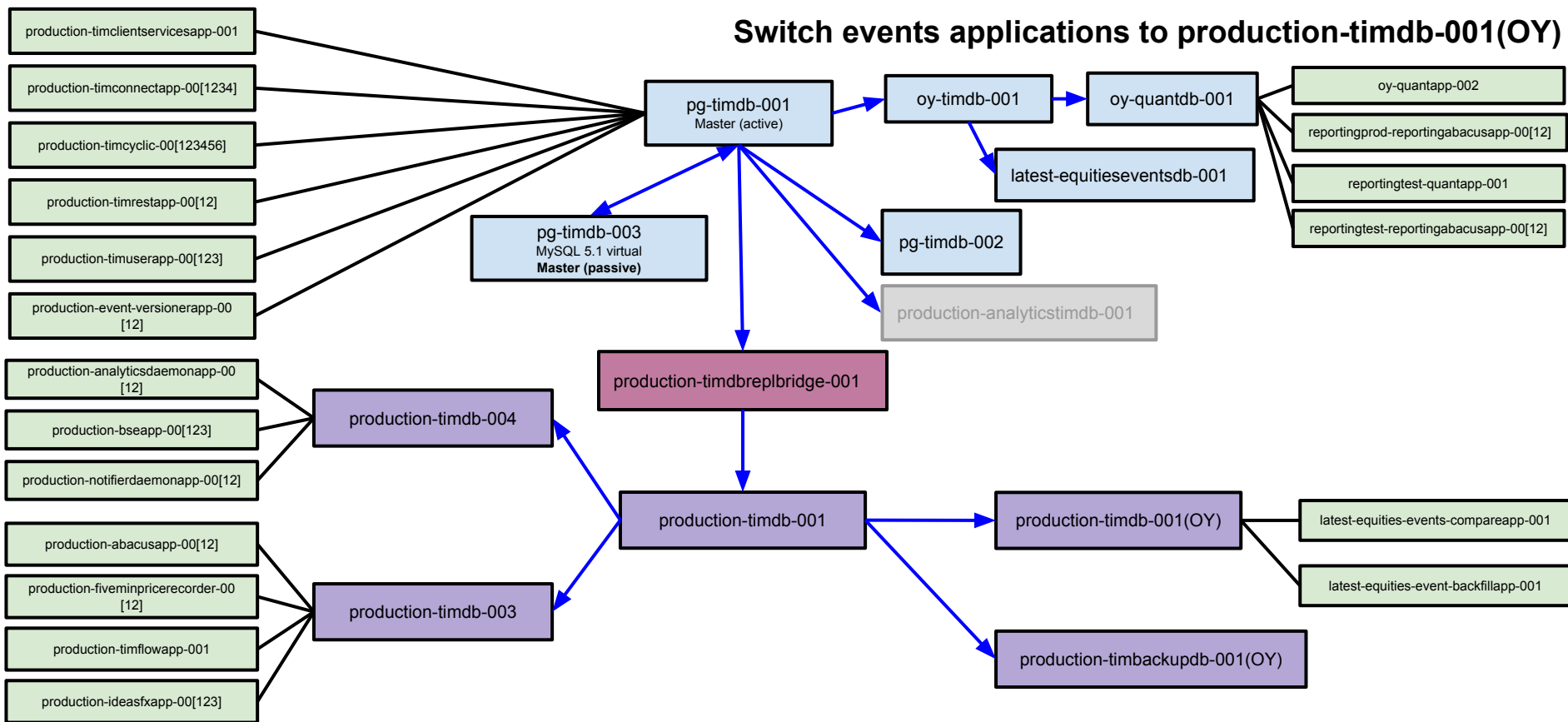
Key

MySQL 5.6	MySQL 5.5	MySQL 5.1
-----------	-----------	-----------

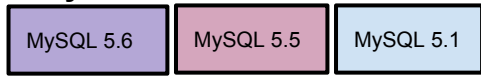
→ Replication (data flow)

— Application interaction/usage

Switch events applications to production-timdb-001(OY)



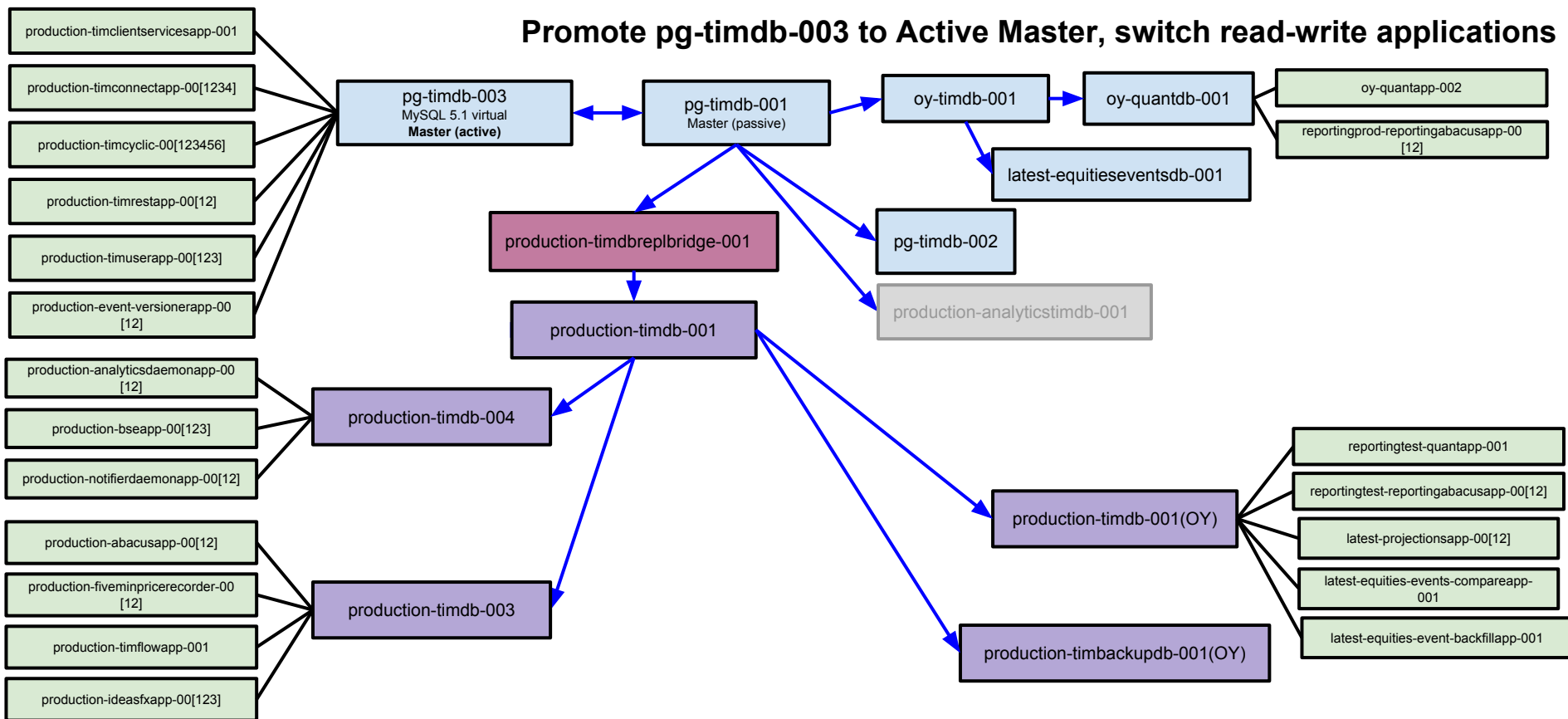
Key



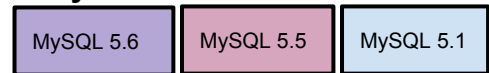
→ Replication (data flow)

— Application interaction/usage

Promote pg-timdb-003 to Active Master, switch read-write applications



Key



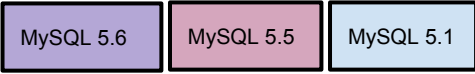
→ Replication (data flow)

— Application interaction/usage

Create production-timdb-002



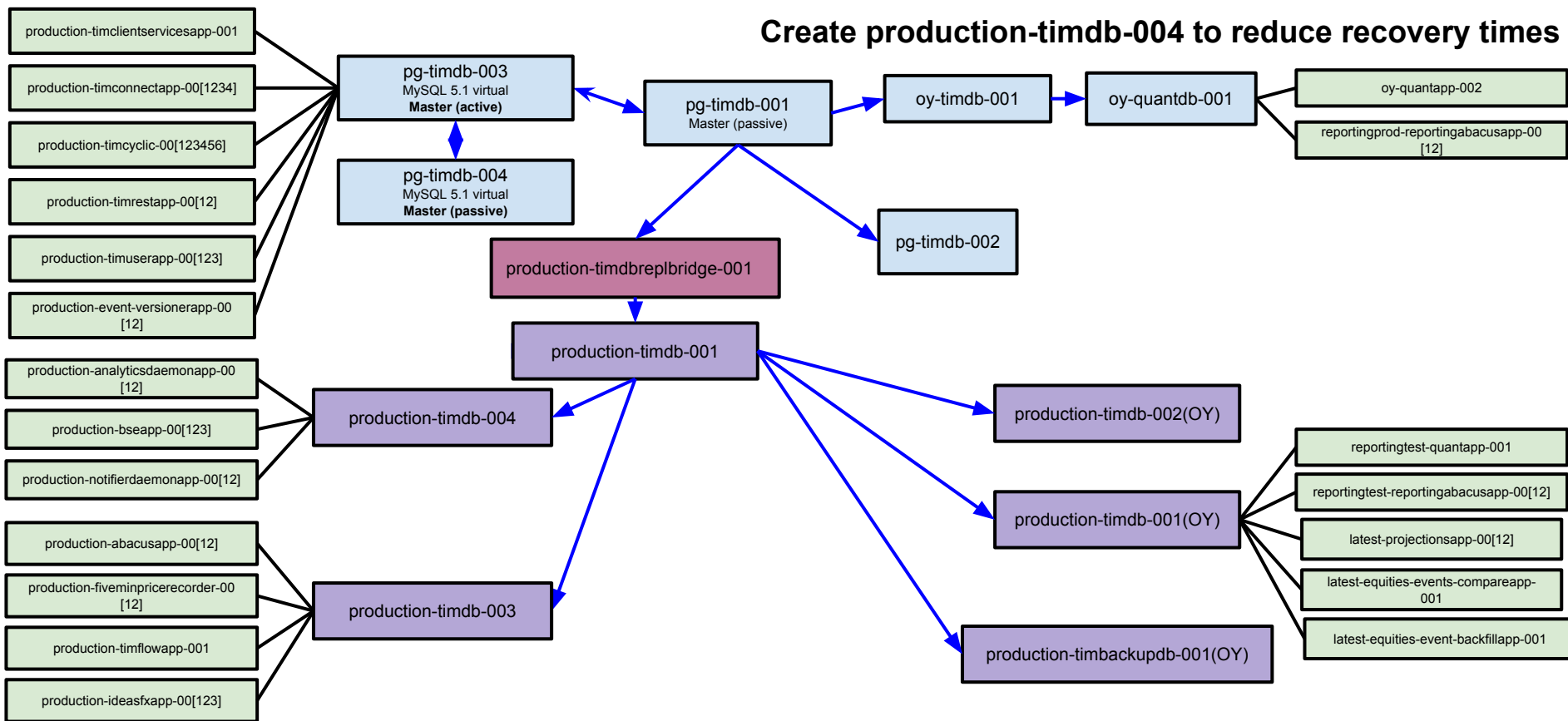
Key



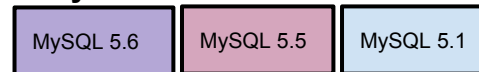
→ Replication (data flow)

— Application interaction/usage

Create production-timdb-004 to reduce recovery times



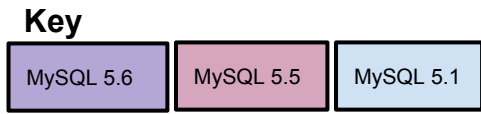
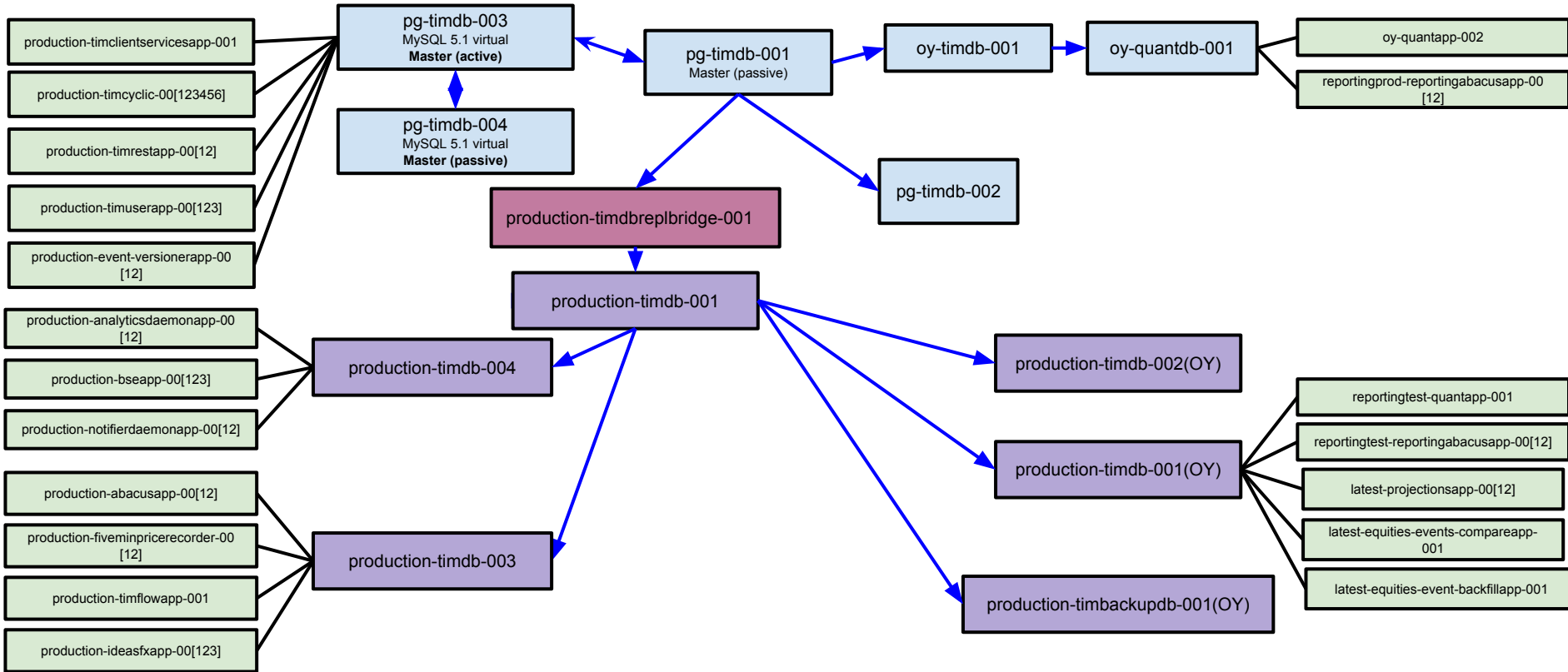
Key



→ Replication (data flow)

— Application interaction/usage

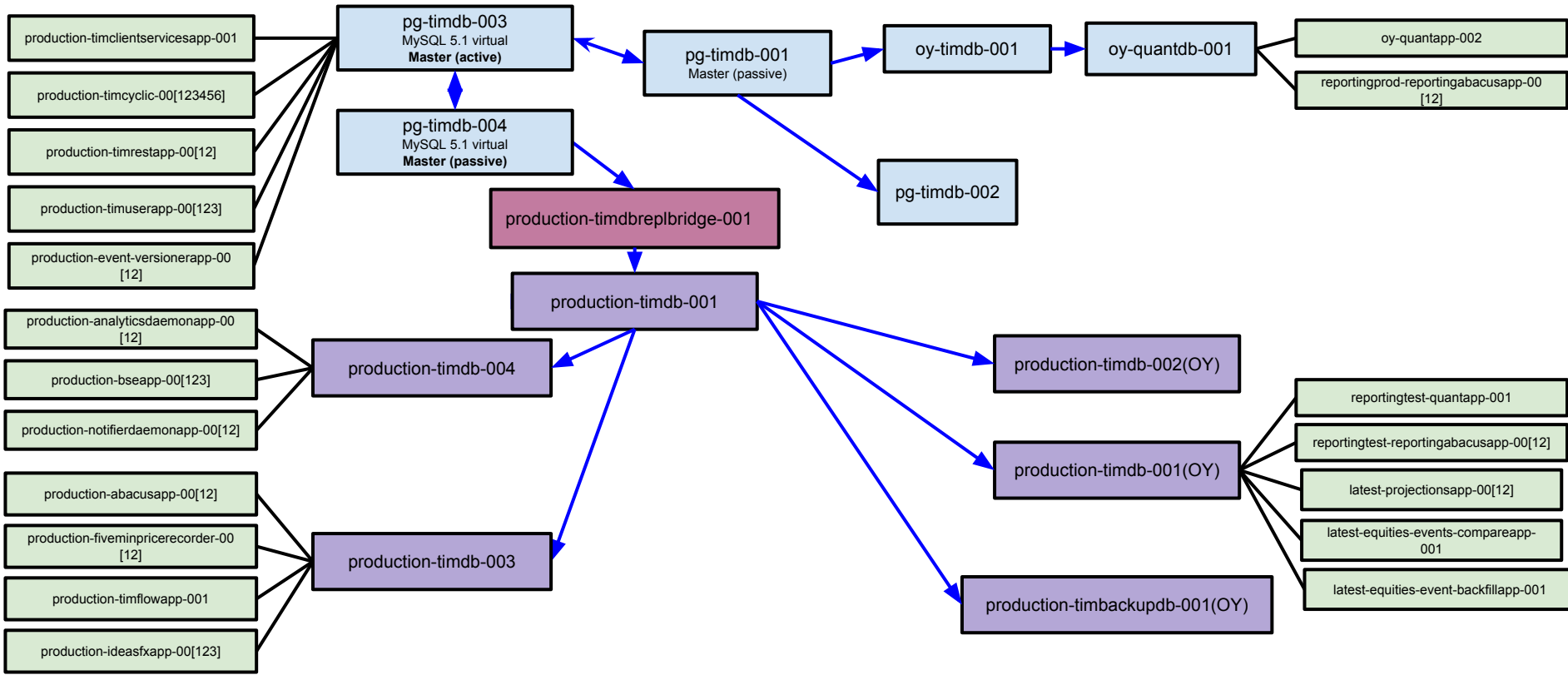
Move TIMConnect to use it's own database - complexity reduction



→ Replication (data flow)

— Application interaction/usage

replbridge replicates from passive master- enables failover of master



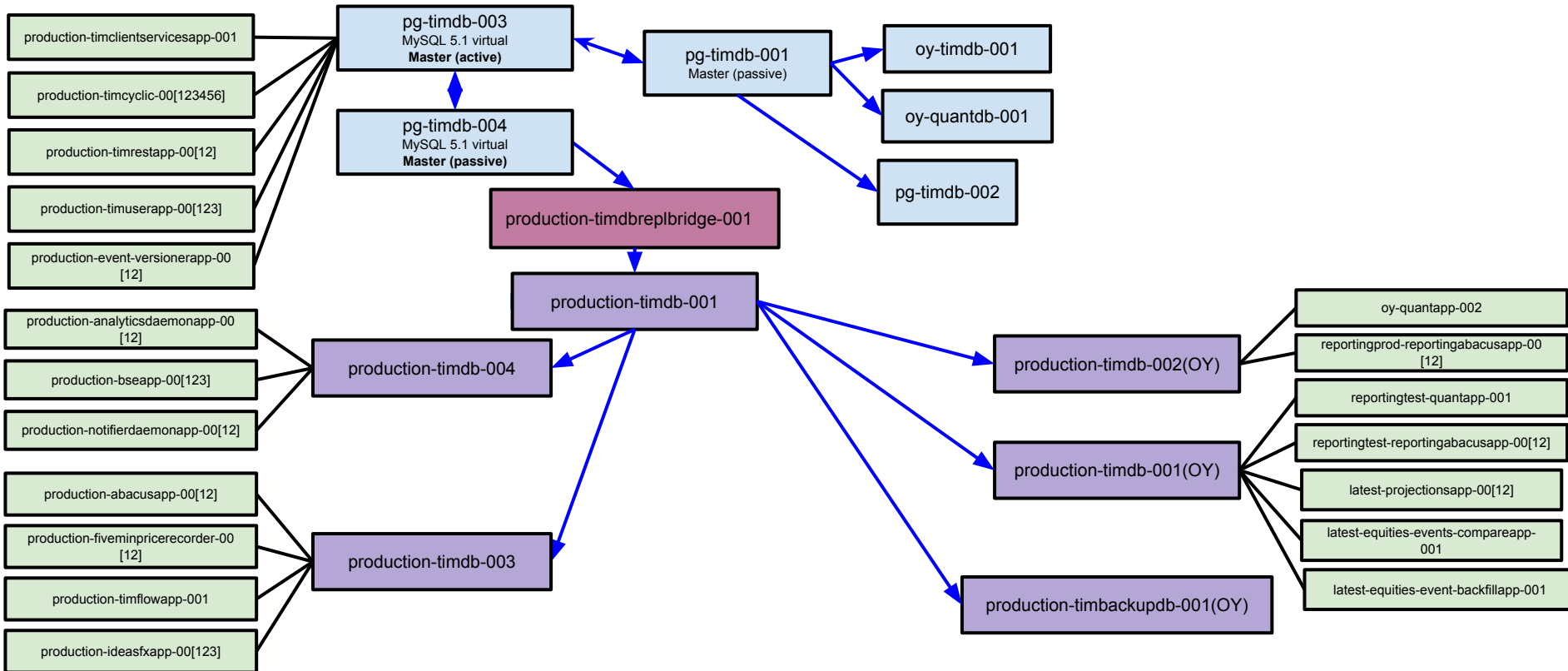
Key

MySQL 5.6	MySQL 5.5	MySQL 5.1
-----------	-----------	-----------

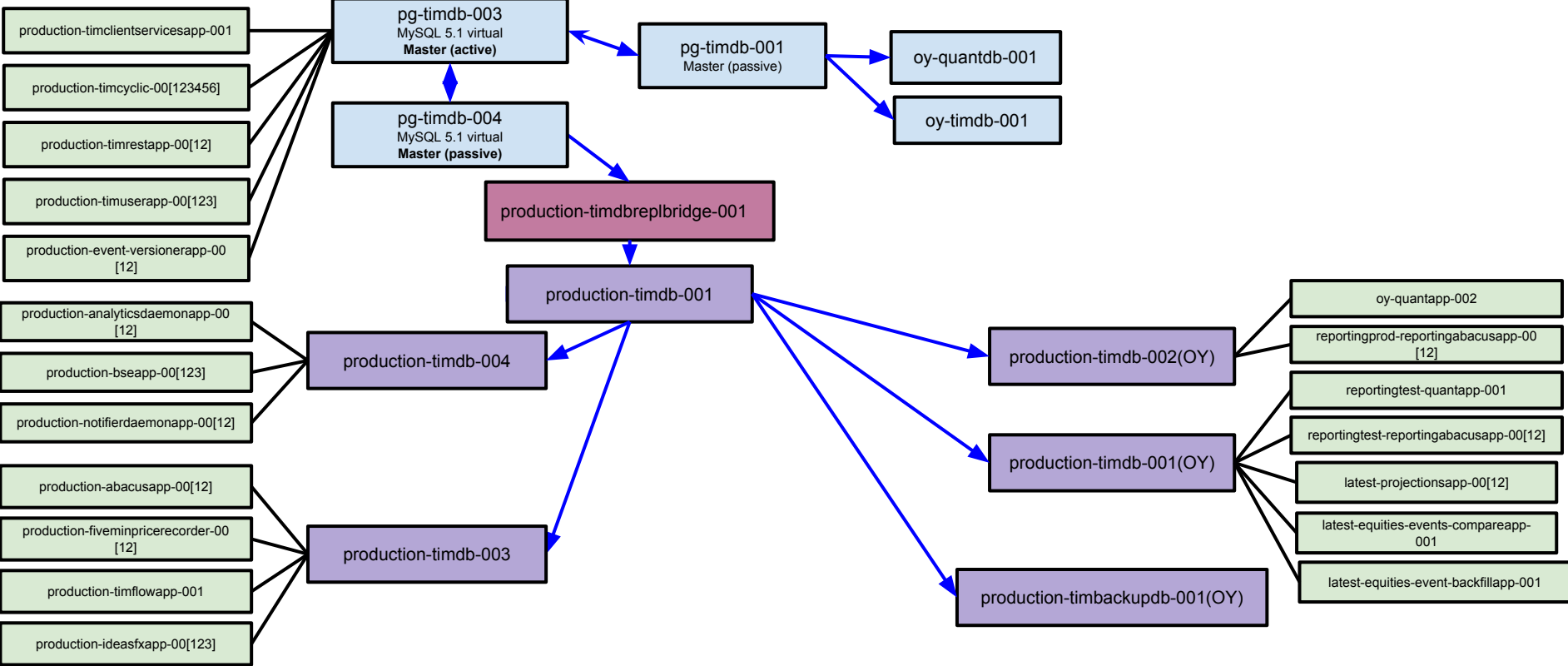
→ Replication (data flow)

— Application interaction/usage

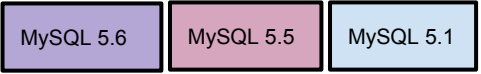
Move finmet to Myql5.6



Remove pg-timdb-002



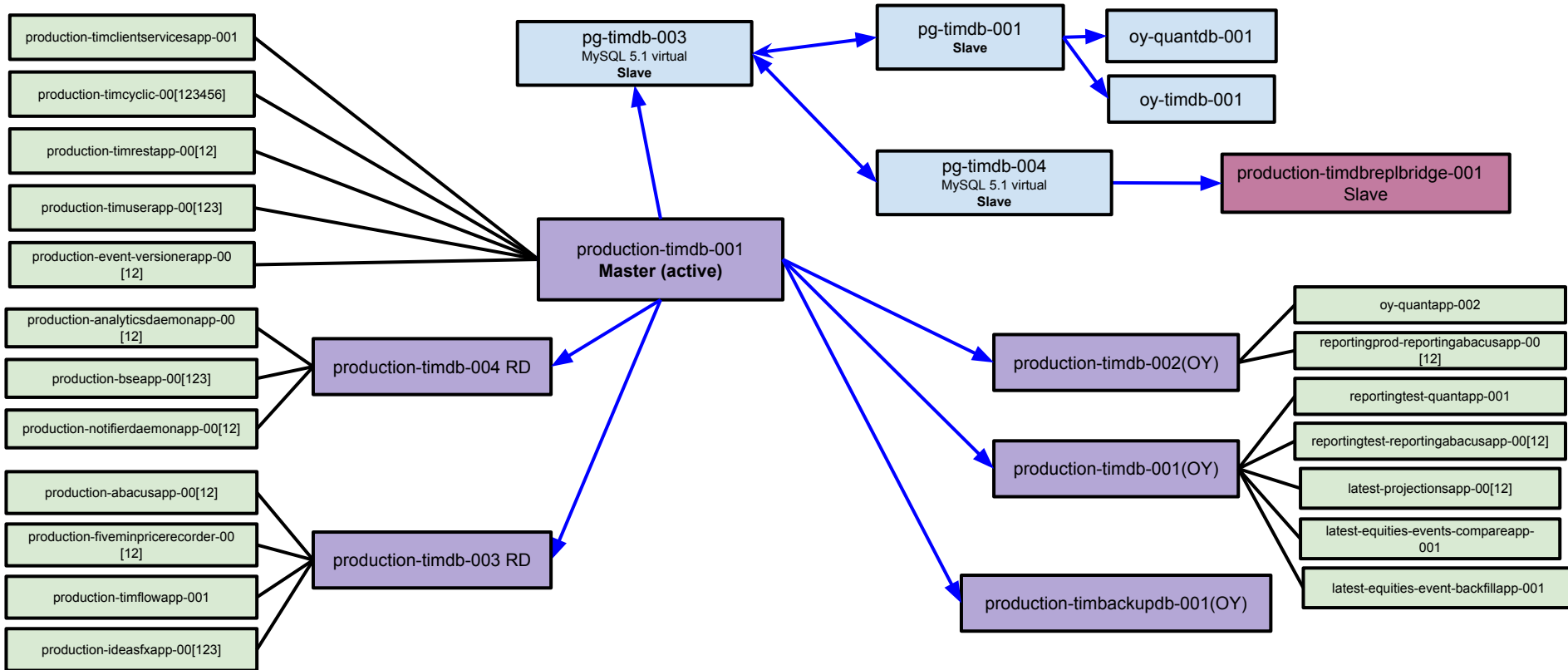
Key



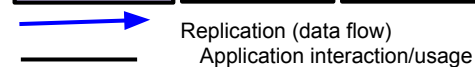
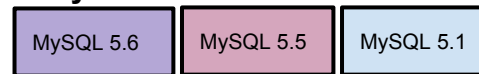
→ Replication (data flow)

— Application interaction/usage

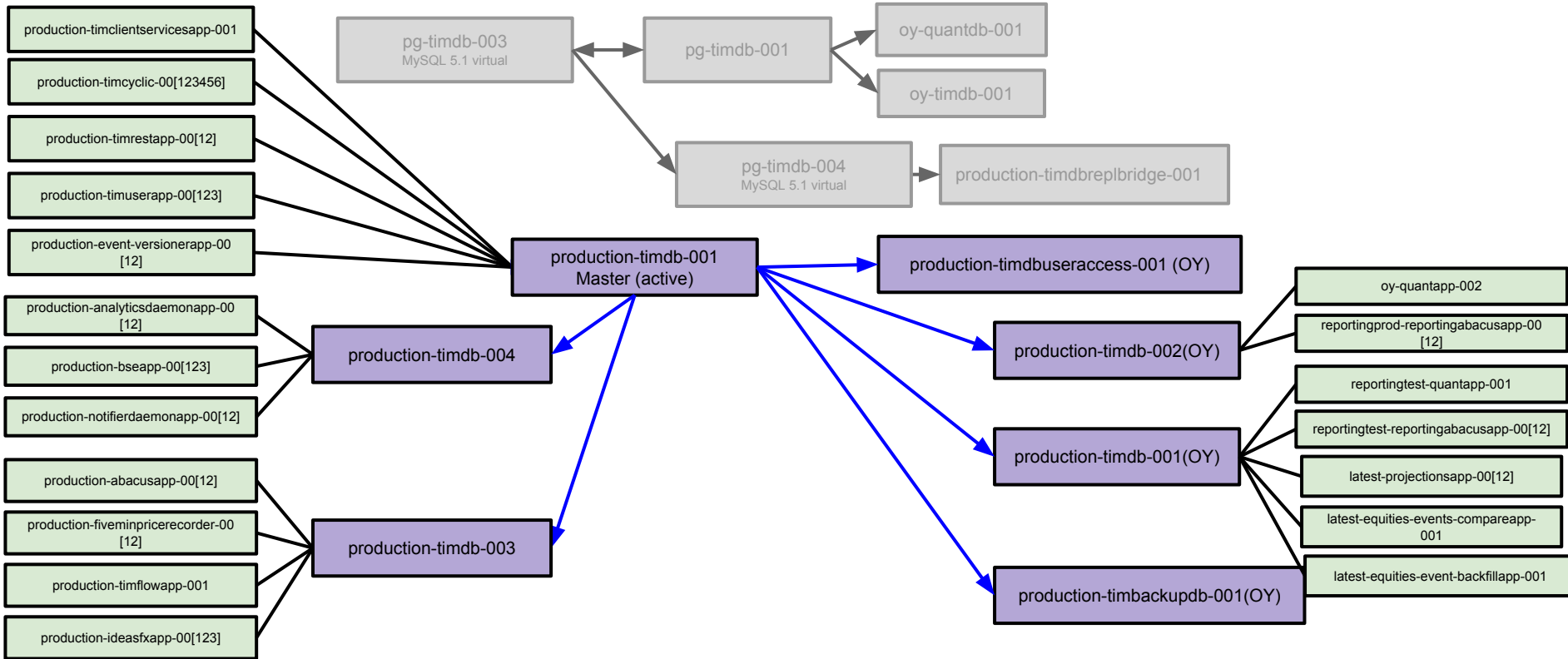
Switch over to MySQL 5.6



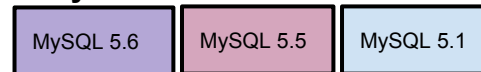
Key



Turn off all the old servers, Build new user access server



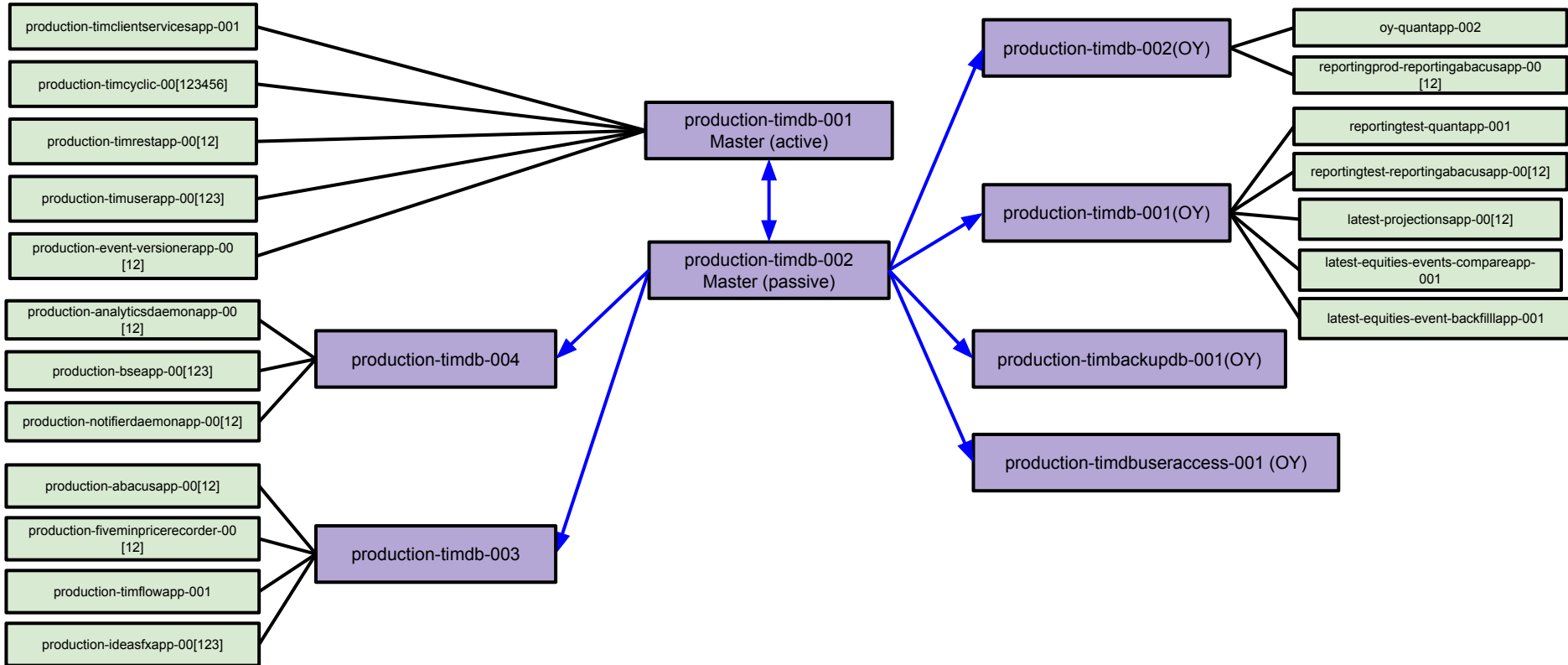
Key



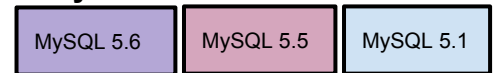
→ Replication (data flow)

— Application interaction/usage

Create new passive master (Enhanced redundancy), adjust replication topology



Key



→ Replication (data flow)

— Application interaction/usage

Create new backup server in PG, reduce PG restoration time/complexity

